



**AN
EXCITING
OPPORTUNITY
FOR FRIENDS
OF**

GREEN SPACES

**CREATE TiCL APP
GUIDES/TRAILS**

with

**NATIONAL FEDERATION OF
PARKS AND GREEN SPACES**

FREE OF CHARGE

1 Why You Should

CREATE A GUIDE/TRAIL

TiCL App is a means for you to very easily create a guide or trail in an area that other people can navigate without having to put anything on the ground.

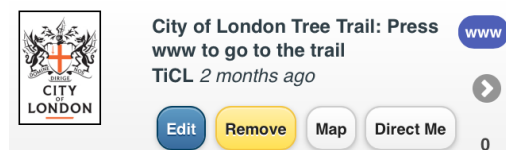
It is fun to follow a trail or explore an area with TiCL App – it's a great way to learn about the things around you.

TiCL App allows local area managers eg Friends to 'geo locate' and link physical features of the environment into trails eg trees, flower beds, sculptures, play parks, cafes etc
TiCL App lets you photograph them and add short descriptions about them.

You can add links to the 'best' web information about each item.

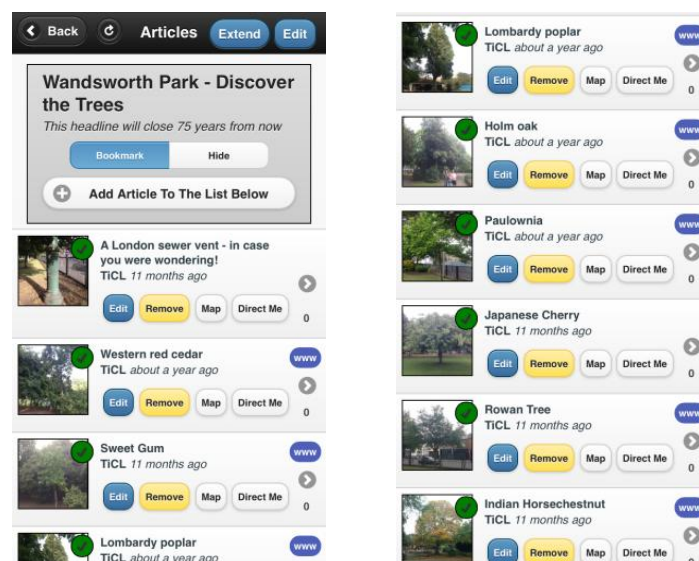
You can find more information about creating a TiCL Trail on <https://ticl.me/trails>

TiCL allows area managers ability to 'brand' their content eg City of London brand their Tree Trail



NAVIGATE A TRAIL

TiCL App returns information to all users as lists with their 'nearest' item on the list at the top. TiCL makes it easy for users to see what's available nearby and find it. It also makes navigating a trail easy - you just keep going to the nearest without repeating any.



The 'Direct Me' feature of the App shows an arrow and a distance to each item.

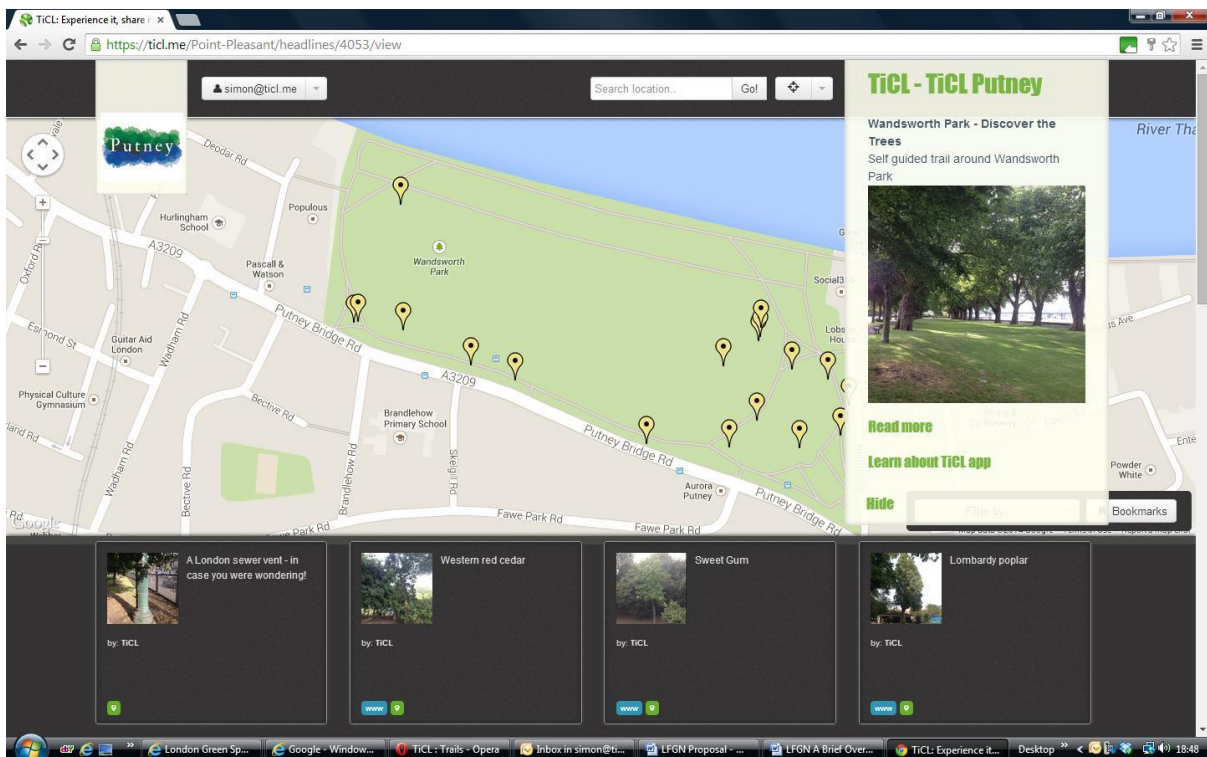


The Map feature of the App shows each item accurately on a Google Map



TiCL App can be used like this to create trails, geo-caching and treasure hunt opportunities – it's fun and educational!

TiCL App information is also displayed on www.ticl.me website



How you do it

Creating a TiCL App Trail/Guide is quick and easy if you follow these simple steps (more information is available at <https://tiel.me/trails>)

- 1 Register your Friends organisation with TiCL

You can do this via the TiCLApp <https://tiel.me/tielapp> (Apple or Android) or via the website <https://tiel.me>

- **Tips**

- Use a password that you will be happy to share with your organisation

- Don't forget your password

- If you don't receive your 'Activation Code' within a few moments please check your spam folder

- Allow push notifications and enable location services if asked

- 2 Go to the centre (roughly) of your Green Space with your smartphone and TiCL App

- **Tip**

- Have your Friends logo as a photo on your phone

- 3 Open TiCL App

- 4 Press + in the top right hand corner

- 5 In Title write '*Your Green Space Name*'

- 6 In 'More...' do write a description of what the trail is going to be about eg '*Tree Trail of interesting trees*'

- 7 Add photo from library eg your Friends Logo

- 8 Press submit (while you are in the Green Space)

YOU HAVE STARTED THE GUIDE!

NOW MAKE IT FREE AND LAST INDEFINITELY

- 1 Go back into the Headline you have just submitted

- 2 Press 'Edit' in the top right hand corner

- 3 Press Premium Editing

- 4 In the Promotion Code Box enter **ParkLove**

YOU ARE NOW READY TO ADD POINTS OF INTEREST TO THE TRAIL / GUIDE

Adding points of interest to the guide or trail you have created is easy

You will need TiCL App

Tip

Decide who you are going to allow to 'update' the points of interest. Points of interest 'Articles' on TiCL can only be edited by the TiCL user that added them (though they can be removed completely by the user that created the headline – YOU!)

You might decide that you are going to create the whole trail – but it might be more interesting to let Friends 'adopt' points of interest' and leave it up to them to update the content from time to time – eg with a tree to reflect leaf colour change, leaf fall, fruiting, flowers etc

- 1 Go to the point of interest with TiCL App
- 2 Find and open the Headline about the trail
- 3 Press refresh (curly arrow top left) a couple of times (this helps the App calculate your position accurately)
- 4 Press 'Add Article To The List Below'
- 5 In Text add a description of the point of interest
- 6 'Take Photo' of the Point of interest
- 7 Press Submit at the location of the point of interest
Tip if you have had to move away from the point of interest to take the photo move back to it before you press submit)
- 8 Check where you have geo-located the point of interest by looking at it using 'Map'

REPEAT THIS PROCESS UNTIL YOU HAVE FINISHED THE TRAIL / GUIDE

THAT'S IT!

For more help on creating a trail check <https://ticl.me/trails>
or contact the TiCL Response Team on contact@ticl.me